



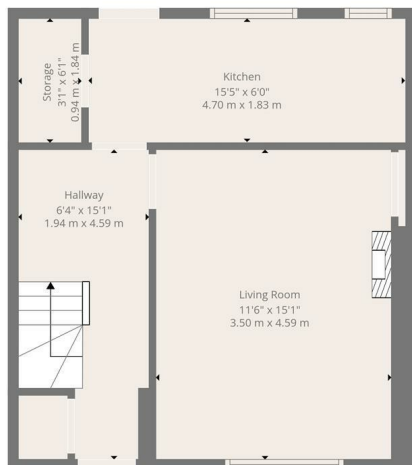
HEMMINGS HOMES

FIXED ASKING PRICE

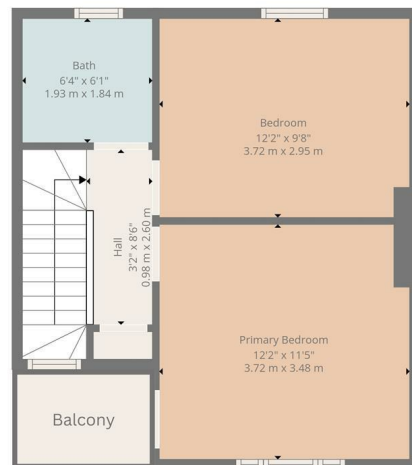
£275,000

Ladywell Road

Edinburgh, EH12 7TB



Ground Floor

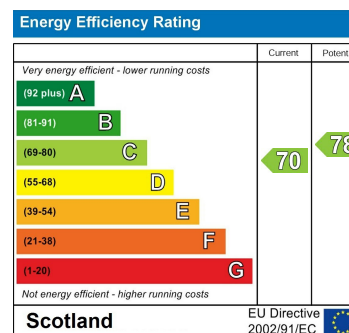


First Floor



TOTAL: 758 sq. ft, 71 m²
 Ground floor: 386 sq. ft, 36 m², 1st floor: 372 sq. ft, 35 m²
 EXCLUDED AREAS: STORAGE: 19 sq. ft, 2 m², WALLS: 81 sq. ft, 6 m²

Floor Plan Created By Cubicasa App. Measurements Deemed Highly Reliable But Not Guaranteed.



Agents Note: Whilst every care has been taken to prepare these particulars, they are for guidance purposes only. All measurements are approximate and are for general guidance purposes only and whilst every care has been taken to ensure their accuracy, they should not be relied upon and potential buyers/tenants are advised to recheck the measurements



OFFICE ADDRESS

376 Brandon Street
 Motherwell
 North Lanarkshire
 ML1 1XA

OFFICE DETAILS

01698 263413
enquiries@hemmingshomes.co.uk
hemmingshomes.co.uk